



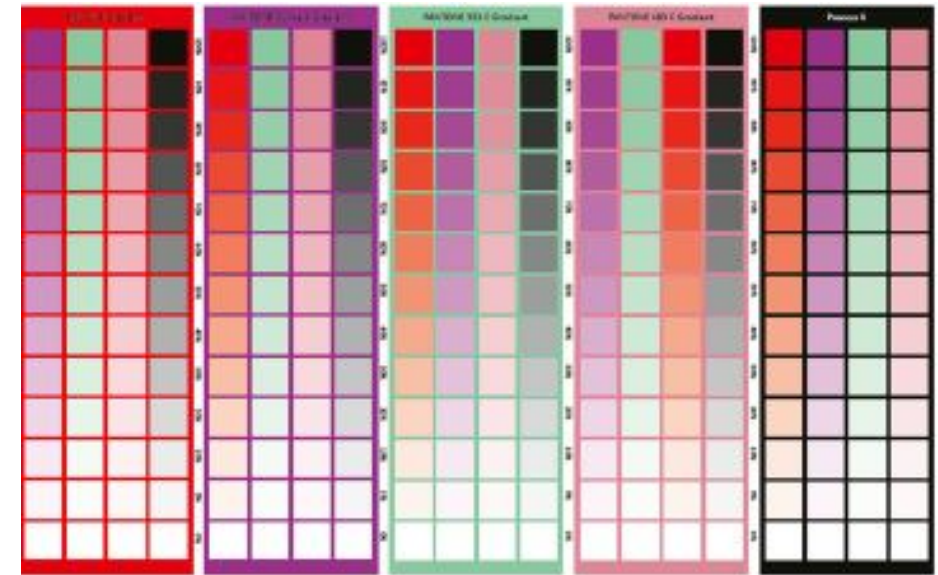
Fogra Multicolor Forum

Radovan Slavuj

1/17/2020

Use Case 1 – Spot color overprint prediction

- Prints on paper used only
- On the nature of the printing process – using opacity information
- Hydra™ vs DE00 accuracy - green background, opposite colors

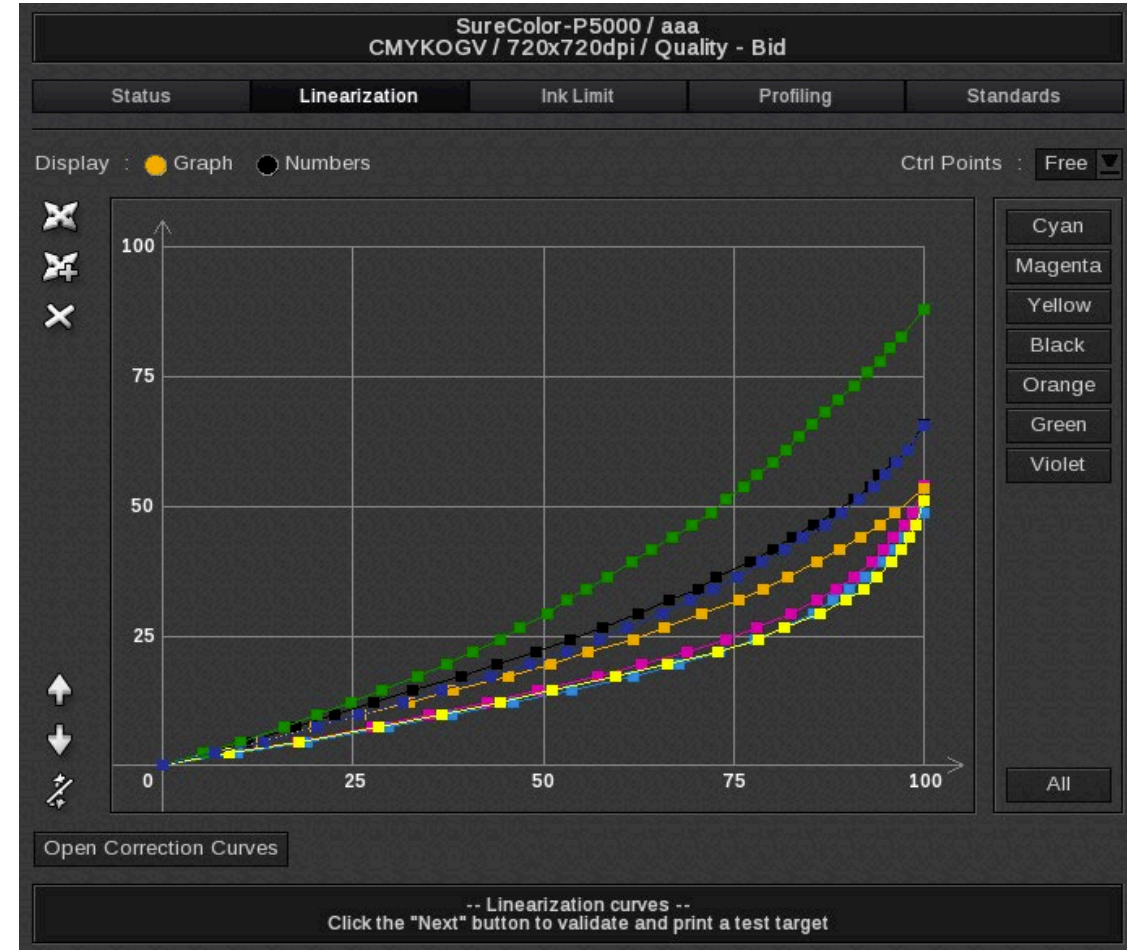


Use Case 3 – Characterization

- Hydra™ modeling vs ICC profile (0.1 vs 0.3 avg DE00)
- Profile size limit

Use Case 4 – Proofing

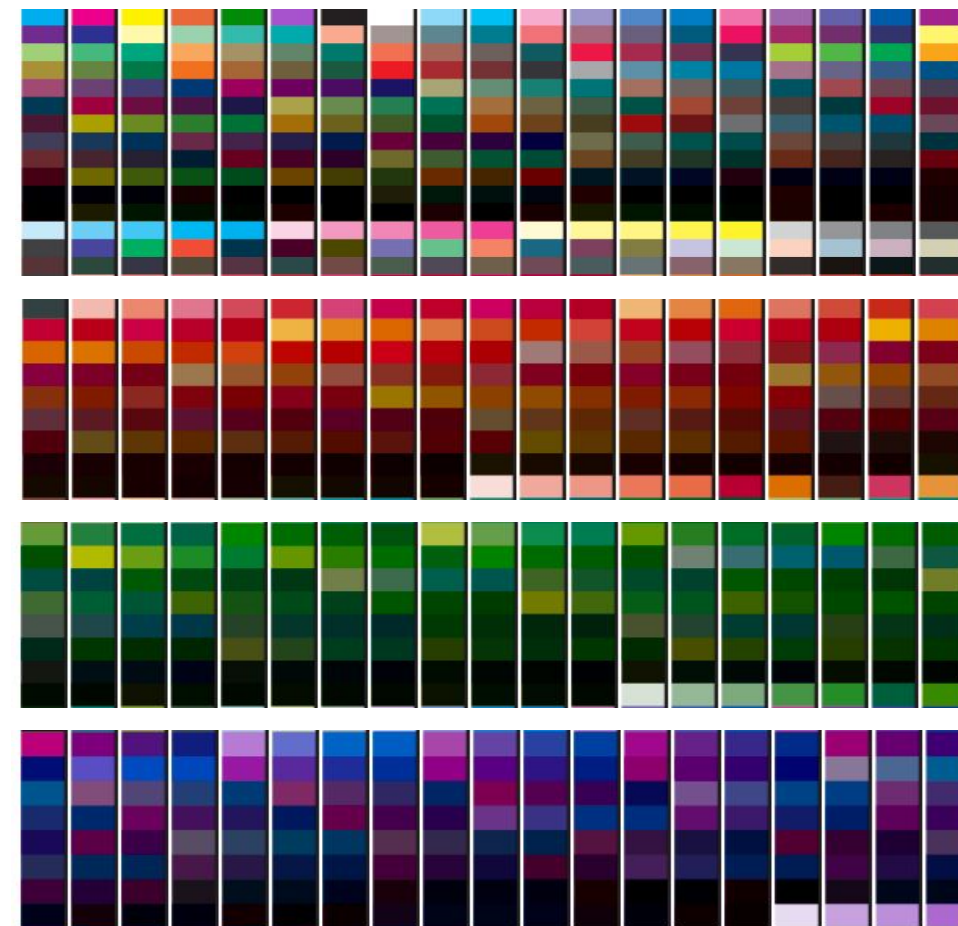
- Alwan – Caldera 7-color proofing workflow (direct 7 channel control)
- Alwan – Caldera Calibration



CMYKOGV Calibration Curves with custom ink - cut

Use Case 4 – Proofing

- Simplified workflow – Hydra one-page chart for profiling
- Modular chart design – quite handy when changing ink cartridges



Alwan Hydra 7 color Profiling Chart

Use Case 4 – Proofing

- It's all about the “right” paper, or is it ?
- Proof specific color management
- Good balance between color accuracy, image quality without paper white simulation
- Implementation of a separation strategy that saves ink and reduces metamerism (e.g. has a closer spectral match)